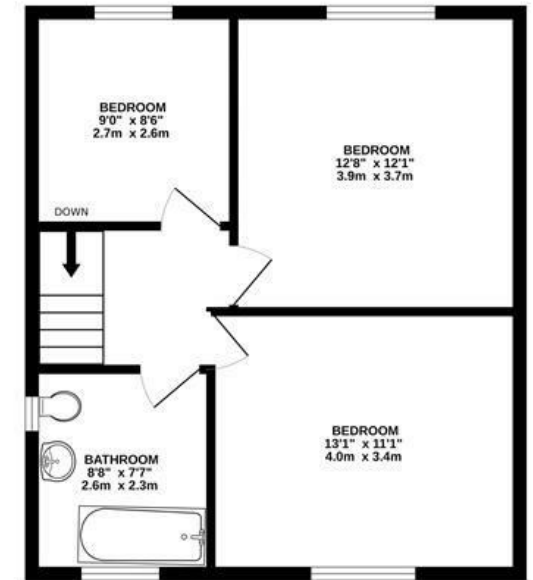
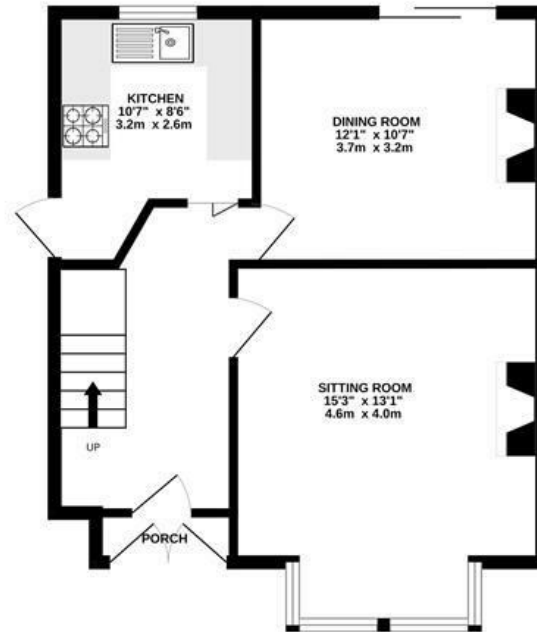


Imperial Walk

KNOWLE

APPROXIMATE FLOOR AREA
90SQM / 971 SQFT



Illustrations are for reference purposes only,
measurements are approximate, not to scale.

Boardwalk

Imperial Walk

KNOWLE, BRISTOL

£

£425,000

zzz

3 Bedrooms



Bristol, BS14

9AD



1 Bathrooms

"The location is perfect, with views across the nature reserve, and south Bristol. It's a quiet street and it's been a happy home for the last 20 years!"

